

Helensville Primary School

NEWSLETTER



From Our Principal's Pen

Formative Assessment
could be called
Informative Assessment;
it is like GPS, telling us
where a student is along
the learning journey.

Jim Knight
at a workshop discussion
Sept. 2016

29 Rata Street
Helensville
Ph. 09 420 8005



Where we know what it is to be a learner

Aim High - Arohia Ake

NEWSLETTER NO. 08

6th June 2019

In our last newsletter I gave you an overview of our proposed reporting system and how this links across the year. In recent days there has been some talk about PATs (Progress and Achievement Tests) and Mathematics at Helensville Primary School. Here is some information we hope you may find helpful.

PATs

In March, Year 4–8 students completed PATs in Mathematics, Reading Comprehension, Reading Vocabulary and Punctuation & Grammar. These are a set of tests we conduct annually and are used by many schools in New Zealand, they are multiple-choice and provide valuable information for students, teachers and schools. The tests allow schools to compare scores with students nationally at the same year level. **They are, however, only one test, taken on one day and results for individual students should be viewed alongside other assessment information rather than in isolation.**

Some teachers have shared PAT data with students and whānau if they feel it supports conversations around learning. This data is available for your child if you want to see it.

Our upcoming reports look at achievement across the whole of Reading, Writing and Mathematics. They are a teacher judgement based on a range of assessments (like PATs), observation of students, conferencing with students, bookwork, online work, etc.

When all of these judgements are completed and collated, we will be sharing the data with the Board of Trustees and then whānau. This data provides a much clearer picture of how students are progressing rather than looking at one assessment alone. Many of our students will also get to see this data and talk about what it means.

Earlier this year, Year 5–8 students had the opportunity to look at last year's data. They engaged in lively discussions about patterns and trends and considered what they thought might influence the data. We will continue to have these important conversations with them.

Mathematics

As we already knew, our Mathematics achievement is a little lower than the national picture in PATs. Across our school and our local Community of Learning schools (Te Kāhui Ako o Kaipara), we have been aware of this trend and are concentrating on this as a school focus. Last year, we examined student achievement in place value and found that it was an area for development. Our neighbouring schools have identified similar patterns. This year, we have adopted a well researched assessment tool with back up resources to support a focus on place value. We are monitoring this carefully and providing teachers with relevant professional development.

Should you have any questions, please feel free to ask.

Ehara taku toa i te toa takitahi engari he toa takimano

My strength is not that of an individual but that of a collective

Deborah Heasman

New Ways of Reporting at Helensville Primary School

This year we have made some changes to the ways we are sharing information with families/whānau.

Conversations about how students are progressing and achieving across the curriculum should be meaningful and ongoing. Sharing information is an essential part of this process.

We have been looking at ways to shift from reporting to parents and whānau as a twice-yearly 'compliance' activity to ongoing information sharing with and between ākonga (students), parents/whānau and teachers.

Our new twice-yearly report forms only one part of our overall reporting process. It shows student progress and achievement against national achievement objectives in Reading, Writing and Maths, and against an effort matrix. It also offers a general comment on the student's learning and participation in the wider curriculum as well as a record of attendance.

The other elements of information sharing used at HPS are the Learner Map Conferences and Seesaw. Throughout this year, teachers and students have worked hard to share as much as possible about learning on Seesaw. We are continuing to develop ways to make this as authentic and meaningful as possible. All whānau members are encouraged to be a part of their students' learning and write comments back to them.

To make the most of the opportunity when responding to work on Seesaw we encourage whānau to be quite specific with feedback. Here are some examples of the types of comments you could make:

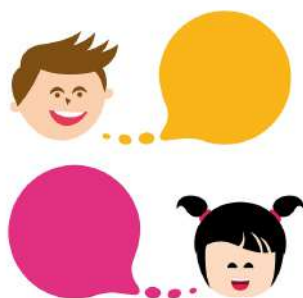
1. A positive compliment about your child's piece of work saying what you like about it e.g. "What a great effort you have made, I can see you have worked very hard on finishing your maths tasks."
2. A constructive comment to help enhance the quality or skill base of the work. e.g. "Keep working on developing your multiplication skills." "I notice you've used colourful squiggly lines. They really look like a caterpillar moving."

Reports will be shared on Wednesday 19th June

The reports are a summary of learning progress and a chance for students, teachers and whānau to think about what has been achieved and what the next steps may be.

The reports have some of the same features as the ones we shared last year and some new ones. The reports will be shared on Seesaw (or sent home as a paper copy to those with no Seesaw access). See your classroom teacher if you would like support to access Seesaw or if you would like a hard copy of your report.

Later this year we will be asking for your feedback on our new processes.





To Helensville Primary School

Tane Evans
Sadie Pengelly
Elliott Pengelly

A very warm welcome to all
new students and families.
We look forward to showing you
all our school has to offer.

Calendar of Events - Term 2 2019

6th June	Rimu trip to Haranui Marae
10-14th June	Matariki Ahunganui Week
11th June	Ski Trial/Training at Snow Planet
12th & 14th June	Whitebait Connection Rooms 20 and 21
12th June	Science Roadshow - Rata and Rimu
19th June	Whitebait Connection Rooms 20 and 21
19th June	Reports
20th & 28th June	Whitebait Connection Rooms 20 and 21
21st June	Vector visiting - Stay Safe with Electricity Yr. 0-4 classes
24th June	International Students arrive
25th June	NW Football Yr. 5-6
28th June	Vector visiting - Be Sustainable with Energy Yr. 5-8 classes
1st July	Junior Tough Guy and Gal Mud Run, Rautawhiri Park, Yr. 3-8
3rd July	International students leave
3rd July	Quick Rip 7's Rugby Yr. 7-8 North Harbour
4th July	Winning House Mufti Day
5th July	Mathex
5th July	Last Day of Term 2 - End of Term Assembly

T.2-WK.5

Values Voucher

WINNERS

Well Done!

Lachlan R19
Gravity R22
Bradley R11
Ollie R20
Kaian R8

Outgrown Uniform?

We welcome any outgrown or
spare uniform
you may like to donate.
Please drop off to the school
office.
Thank you in advance.



**Sadly due to a
lack of voluntary
help, Breakfast Club
on Tuesday and
Thursday mornings
from 11th June
will no longer be
available to our
students.**



**Important notice
to all
parents/caregivers
of students
who catch
the school bus
home. Parents,
you MUST be
waiting at the
bus stop to
collect your
child/children
or they will be
returned to
school.**



Instrumental music lessons at Helensville School.

We provide a range of instruments and lessons
to suit your child*

Find out more:
Call Kristin 021 443 620
email info@musicroom.org.nz

*instrument choices vary according to tutors





Room 11

Doing Experiments with Room 22



Inquiry of change

This term our inquiry is on 'Change,' focusing on science experiments. We have been comparing chemical and physical changes by experimenting with a range of different materials. We are all having so much fun!

Tiakimanawa

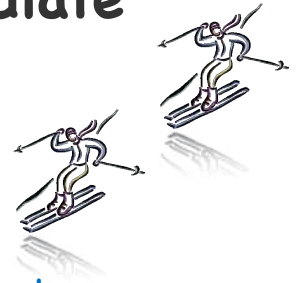
*Ehara taku toa i te toa takitahi, ēngari he toa takitini-
My strength is not made of a single warrior, but of many.*

Tiakimanawa has been pumping this year with significant cultural events. Pasifika performed at the Kaipātiki Event which was a huge success and resulted in a photo in the Helensville News. Recently the Ngā Mataamua Kapahaka Rōpū participated in a wānanga at our local marae - Haranui. The Ngā Pōtiki Kapahaka Rōpū are learning and polishing items which will be showcased at this year's Kaipara Festival. Another big focus within Tiakimanawa, is preparing for Matariki Ahunganui Week which will see a range of activities acknowledging this symbol of the Māori new year.

Stay tuned for more details!



North Island Primary and Intermediate School Snow Sports Championships (NIPS) 2019



Year 7 & 8 ski competitors Monday 26th August – Thursday 29th August

Year 1 – 6 ski competitors Monday 2nd September – Thursday 5th September

Attention Helensville Primary School Skiers!

Once again it is nearly time for this annual event at Whakapapa. It is the largest skiing competition held on Mt Ruapehu with over 300 competitors. Keen skiers who are able to negotiate their way down Whakapapa from Knoll Ridge (or similar mountain) are invited to register their interest and to attend a trial/training at Snow Planet on Tuesday 11th June.

Should your child then make it into the team, the following days have been booked for ski training at Snow Planet: Tuesday 6th August, Tuesday 13th August and Tuesday 20th August from 12.00 – 1.30pm, departing school at 11am. The cost per skier per Snow Planet session will be \$46.00 (\$36 for Snow Planet members) which includes entry, 1 ½

hours with a race coach and race lines. Payment will need to be made at the counter at Snow Planet before each training. Skis and boots can be hired for an extra \$22.00, jacket and pants for \$19.00 and gloves for \$9.00. If you have a Snow Planet RFID card please bring it along, otherwise there is a one off charge of \$6 for this card, which allows you to access the lifts. We will also require parents to provide transport and support with getting ready.

During the week of NIPS all competitors will need an adult to stay with them. Because it is such a high risk event, we cannot ask another parent to take responsibility for someone else's child. Event entry and accommodation costs are expected to be approximately \$350.00 per skier. We would love to expand our core group of skiers so please email Helen Gafa, heleg@helensville.school.nz or see the office to register your interest.



A big thank you to South Kaipara Rotary
for sponsoring cooking classes this term
at Te Whare Oranga o Parakai.



We had so much fun and very tasty results!



Tough Guy and Girl Challenge

Would you like prime position to cheer on your muddy child?
Would you enjoy a hamper full of goodies?
Would you appreciate **FREE** childcare (including breakfast) if
you volunteer?

PATHS have teamed up with the organisers of The Tough Guy and Girl Challenge at Rautawhiri Park in July this year and your support would be warmly welcomed. We are looking for 28 volunteers (age 18+) for Monday 1st July and Tuesday 2nd July to help at registrations and on the muddy track. (7.45am-1pm). We have the potential to earn up to \$3500.00 for the school.

PATHS will pay for your child / children (up to two children per volunteer) to attend Before School Care in the Helensville School Hall, from 7.30am - 8.30am.. Breakfast will also be offered to those who attend. Children **MUST** be school aged. Once you return your slip below, please contact Kimmie 021 420 924 to book in.

Volunteers will go in the draw to win an amazing hamper with local beer, wine, meat, Parakai Springs tickets, massage vouchers and much, much more!

For this AMAZING opportunity (and to help support the fundraising efforts of our school, **PLEASE, PLEASE, PLEASE** contact Kim Godek in Room 21, either by coming into class, returning the below slip, emailing kimg@helensville.school.nz, or by giving your details to the lovely office ladies to pass on.



NEW ZEALAND'S BEST LOVED & HIGHEST RATING KIDS TV SERIES IS
BEAMING LIVE TO THE NATION FOR THE FIRST TIME IN HISTORY FROM
HELENSVILLE PRIMARY SCHOOL!

Date: Sunday, June 16TH
Time: 8am-10am

FREE LIVE ENTERTAINMENT, LOADS OF GAMES, FUN & LAUGHTER.
A FABULOUS FREE FAMILY-FRIENDLY EVENT FOR THE WHOLE WHANAU!

Looking forward to seeing as many smiley faces in the crowd as possible!
Come on people, show us what an awesome place you live in!



THE BIGGER THE CROWD, THE MORE GUNGE, FOAM AND FUN!

Wellbeing Life Skills for Stabilising Stress

Due to popular demand, we are running this course again...

When: 30 May - Managing Anxiety and Stress
6 June - Mindfulness Works
13 June - Building Resilience

Where: St. Matthews's Church (Anglican Methodist Church)
60 Garfield Road, Helensville

What: **FREE** workshops open to anyone in the community interested in
learning simple techniques to manage anxiety, worry and stress

Facilitated by: Cherie George (Helensville Women & Family Centre)
Herby Skipper (Te Ha Oranga)

RSVP: Attendance or enquiries: drop by or call into
Helensville Women and Family Centre (09 420 7992)

Childcare available

10am -
12 noon

 Helensville Women
& Family Centre
Strengthening Women and Families

Kaukapakapa Scouts Fundraiser

We are doing a First Aid Kit Fundraiser to help raise money for Camping equipment for our youth. All Scouts require a first aid kit and the small ones are suitable for backpacks while out walking and on camps.

Attached is a flier for you to see, the large first aid kits are \$39.95 each and the small personal ones are \$15 each and come in green and blue.

To place an order please click on the link.

<https://forms.gle/AFxCzcmjrk612RmP7>

This link to the order form is on the school Facebook page.

Please arrange payment to our bank account 12-3139-0048950-00.

Please use your name and phone number as reference.

Please share with your families and social network.

Closing date is 14th of June 2019.

Choose your First Aid Kit

Large Premium First Aid Kit/Comprehensive Vehicle First Aid Kit

Our large premium first aid kit/Comprehensive Vehicle First Aid Kit contains almost 80 items (including a digital thermometer!) and exceeds Worksafe guidelines. An excellent all purpose first aid kit for the home, vehicle or business.



Contents List

- FREE Digital Thermometer
- 1 x Instant Ice Pack
- 2 x Emergency Blankets
- 1 x CPR Resuscitation mask with valve
- 2 x Eye Pad 5.5cm x 7.5cm
- 2 x Burns Dressings 20cm x 30cm
- 2 x Conforming Bandage Rolls 6cm x 400cm
- 2 x Conforming Bandage Rolls 8cm x 400cm
- 20 x Band Aid strips 7.5cm x 2cm
- 2 x Triangular Bandages 90cm x 90cm x 127cm
- Long adhesive strip 6cm x 20cm
- Adhesive Multi-pore Tape Roll 13mm x 5m
- 3 x Butterfly Adhesive Plasters 7.4cm x 4.5cm
- 2 x Knuckle Adhesive Plasters 7.5cm x 3.7cm
- 4 x Semi-permeable Dressings 6cm x 7cm
- 3 x Adhesive Island Dressings 6cm x 7cm
- 2 x Adhesive Island Dressings 6cm x 10cm
- Combined/Abdominal absorbent pad 23cm x 12.5cm
- Scissors 15cm
- Tweezers (metal)
- 4 pairs large PVC safety gloves
- 10 x safety pins
- 4 x Soap wipes 20cm x 19cm
- 4 x Saline Cleansing Wipes 20cm x 19cm
- First Aid Guide

\$39.95

[ORDER INSTRUCTIONS HERE](#)

Essential Items/Compact Travel First Aid Kit

These nifty hard shell compact first aid kits contain essential first aid items in a stylish, easy to carry hard shell case with carabiner. Available in both blue and green.



Contents List

Measures approx. 12cm x 9cm x 4cm

- 10 x bandaid plasters
- 4 x knuckle plasters
- 2 x pairs pvc gloves
- 1 x cleaning wipe
- 1 x soap sachet
- 1 x CPR mask
- 1 x paper tape roll
- 1 x adhesive island dressing
- 1 x non woven adhesive dressing
- 1 x small scissors
- 1 x first aid guide
- 1 x carabiner

\$15

FIRST AID KITS

LARGE PREMIUM KIT

SUPPORT OUR FUNDRAISER

ORDER YOURS NOW!



\$39.95

\$15

\$15

COMPACT TRAVEL KITS

[ORDER INSTRUCTIONS HERE](#)

TOP QUALITY



School Drivers Wanted

We are Hiring Drivers in Helensville area

Part Time Positions

We are looking for reliable local people as Bus Drivers to work from Helensville depot.

This is a great chance to join the team of a well established New Zealand family business. We will give you a steady income with time to enjoy life.

Newcomers to the industry are welcome, full training provided to suitable applicants.

All You Need is: • A Current Class 2, and "P" endorsement an advantage
we would be prepared to train the right candidates

You need to be a New Zealand Citizen, Permanent Resident or Hold a Valid Work Visa.

If this sounds like you

Contact Us Today

Email us : helensville.depot@ritchies.co.nz



RITCHIES



Kaipara College Proposed Enrolment Scheme

The Kaipara College Board of Trustees is in the process of implementing an enrolment scheme as directed by the Ministry of Education Under section 11H(1) of the Education Act 1989.

The proposed zone is available for viewing on the school website www.kaipara.school.nz

All students who live within the home zone shall be entitled to enrol at the school.

Members of the community are invited to make comment regarding this proposed enrolment scheme in writing to: The Board of Trustees, Kaipara College, Rautawhiri Road, Helensville 0800, closing 2nd June 2019.

**COMMUNITY
NOTICES**

Disclaimer

These are community notices that are not connected with Helensville School. Parents should make their own judgements with regard to the safety and suitability of any of these programmes for their children.

Helensville School - Where we know what it is to be a learner

Please Support Those Who Support Us

\$500 DONATION IF YOU LIST & SELL WITH US!

List and sell your property with Kerry and Doug King from Barfoot & Thompson Helensville Branch, and we will donate \$500 to Helensville Primary School (conditions apply).

Proven track record, friendly, honest and experienced in your area.

Local, Loyal and Loving It!



Doug King
M. 027 249 1982
AH. 09 420 8616
d.king@barfoot.co.nz



Kerry King
M. 027 458 7229
AH. 09 420 8616
k.king@barfoot.co.nz

Barfoot & Thompson

Office 09 420 6090

www.barfoot.co.nz



RESIDENTIAL and COMMERCIAL
New projects or renovations • Testing and tagging
For reliable service call
NICK HONEYCOMBE
420 9822 or 021 735 828 • nwstnz@gmail.com
28 Rautawhiri Road, Helensville

Gumboots
Early Learning Centre
www.gumboots.ac.nz
1157 Peak Road R D 2 Helensville, ph 411 9038

Helensville Mechanical Services
90 Mill Rd, Helensville
Phone: 09 420 8177

J Olsen Building
Alterations
Renovations
Repair Work
Landscape Construction etc...
Ph: (09) 420 7045
Mobile: 0274 356 846
Fax: (09) 420 7439
debbieolsen@kineet.co.nz
Give John the Builder a call

For all electrical repairs,
installations, maintenance
and servicing.
Residential * Commercial * Rural
Ph 09 420 7882 | 0274 976 092
 Electrical Laser
helensville@laserelectrical.co.nz

countdown
Every Monday, Countdown Helensville donate
fruit and bread for students without lunches.
Please support those who support us. Shop at
Countdown Helensville.

Positive Image
www.positiveimage.co.nz
09 424 1262
T-shirts, Hats, Sportswear, Workwear,
Pens, Key Rings, Mugs, Bags, Teddies,
Corporate, Drink Bottles, Glassware,
Gift Packs, Coolie Bags & More!
Branding available.
Contact us for a free quote!

PHYSIO FLEX
KEEPING HELENSVILLE MOVING
09 420 8899
www.physioflex.co.nz
www.facebook.com/physioflexhelensville/

Helensvilleglass
24 HOUR EMERGENCY SERVICE
Glazing | Mirrors | Splashbacks
Balustrades | Double Glazing
Screens | Frameless Glass showers
0800 825 100 | Ph (09) 420 8210
Email info@helensvilleglass.co.nz
48 Mill Road, Helensville

BEAUTY ELIXIR
with Melissa Carr - Cosmetic Tattooing
TEL 09 420 9775 MOB 022 465 0727 | marias1113@yahoo.co.nz

Would you like to advertise here?
Please contact admin@helensville.school.nz